



**Kampus
Merdeka**
INDONESIA JAYA

**ZONA
INTEGRITAS**



Macroeconomics of Port Numbay



Boy Piter Nizu Kekri, SE.,M.Si

NIDN/NIP: 0024108908/198910242019031019

Alamat Email Pribadi: kekryboy@gmail.com

Alamat Email Institusi: boypiters.kekri@feb.uncen.ac.id



Dosen Jurusan Ilmu Ekonomi-FEB Universitas Cenderawasih



**Kampus
Merdeka**
INDONESIA JAYA

**ZONA
INTEGRITAS**



Data Category



	B	C	D	E	F	G	H	I	J	K	L
	Growth of Port Numbay	Sector Growth: Including (-)	Sector Growth: Rationalize (t+1)	Sector Growth: Rationalize (t-1)	Port Numbay Economic Sector	Port Numbay Economy	Average	Sum	Percent	Cumulative	Pareto_Including (+)
1											
222	3.24	2.55	2.55	2.55	Health Services	Economic Sector	6.775	1613	0.158	0.163	0.785
223	3.17	2.6	2.6	2.6	Health Services	Economic Sector	6.775	1613	0.161	0.163	0.798
224	3.87	0.06	0.06	0.06	Health Services	Economic Sector	6.775	1613	0.004	0.005	0.806
225	4.53	4.58	4.58	4.58	Health Services	Economic Sector	6.775	1613	0.284	0.284	0.825
226	11.22	9.74	9.74	9.74	Other services	Economic Sector	6.775	1613	0.604	0.607	0.835
227	10.66	7.42	7.42	7.42	Other services	Economic Sector	6.775	1613	0.46	0.466	0.853
228	9.84	12.8	12.8	12.8	Other services	Economic Sector	6.775	1613	0.794	0.798	0.89
229	10.35	13.17	13.17	13.17	Other services	Economic Sector	6.775	1613	0.817	0.825	0.893
230	10.19	11.83	11.83	11.83	Other services	Economic Sector	6.775	1613	0.734	0.742	0.907
231	8.48	11.63	11.63	11.63	Other services	Economic Sector	6.775	1613	0.721	0.729	0.913
232	7.23	6.17	6.17	6.17	Other services	Economic Sector	6.775	1613	0.383	0.39	0.918
233	6.02	6.08	6.08	6.08	Other services	Economic Sector	6.775	1613	0.377	0.381	0.954
234	5.45	7.49	7.49	7.49	Other services	Economic Sector	6.775	1613	0.464	0.468	0.967
235	4.95	6.96	6.96	6.96	Other services	Economic Sector	6.775	1613	0.432	0.436	1.03
236	3.24	-2.53	1.22	4.43	Other services	Economic Sector	6.775	1613	0.275	0.279	1.08
237	3.17	1.31	1.31	1.31	Other services	Economic Sector	6.775	1613	0.081	0.084	1.185
238	3.87	4.55	4.55	4.55	Other services	Economic Sector	6.775	1613	0.282	0.283	1.35
239	4.53	3.84	3.84	3.84	Other services	Economic Sector	6.775	1613	0.238	0.241	1.422



Kampus
Merdeka
INDONESIA JAYA

ZONA
INTEGRITAS
NOL TOLUPSI

Descriptives



Descriptives	N	Mean	Median	Variance	Range	Data Type		
Growth of Port Numbay	238	7.086	6.625	8.2546	8.05	Quantitative	BPS	Input
Sector Growth: Including (-)	238	6.082	6.16	26.4963	51.59	Quantitative	Data Processing	Output
Sector Growth: Rationalize (t+1)	238	6.742	6.235	14.2723	21.72	Quantitative	Data Processing	Output
Sector Growth: Rationalize (t-1)	238	6.775	6.235	15.421	22.85	Quantitative	Data Processing	Output
Pareto: Including (t+1)	238	0.424	0.392	0.0599	1.42	Quantitative	Data Processing	Output

Keterangan:

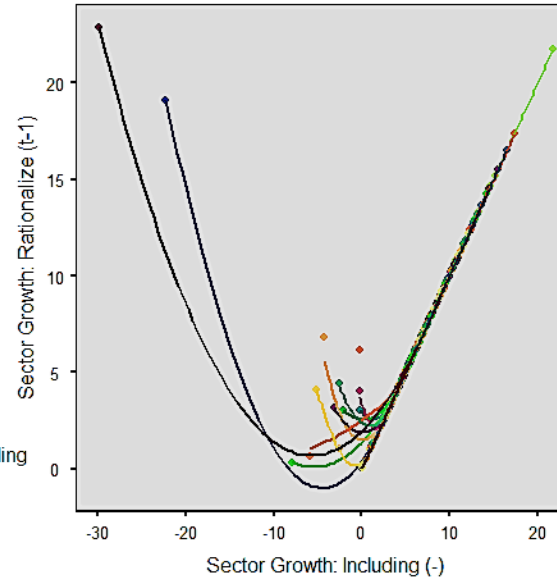
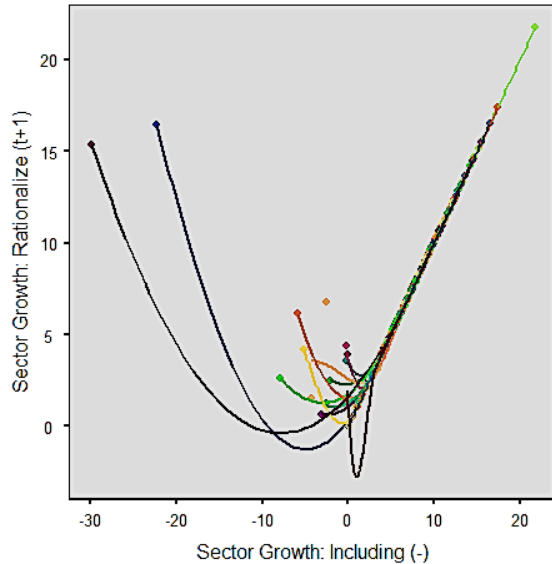
1. Data fluktuatif Ekonomi tumbuh minus atau plus menyebabkan outlier, hal wajar tentang realitas makro Ekonomi;
2. Simbol **(-)**; **(t+1)**; **(t-1)**; saya melakukan rasionalisasi **Input** (Data Cleaning) istilah lainnya cleansing atau scrubbing;
3. Hasil rasionalisasi saya menyebutnya **Output** melalui Data Processing;



Kampus
Merdeka
INDONESIA JAYA

ZONA
INTEGRITAS
Nopust

Input Rationalization

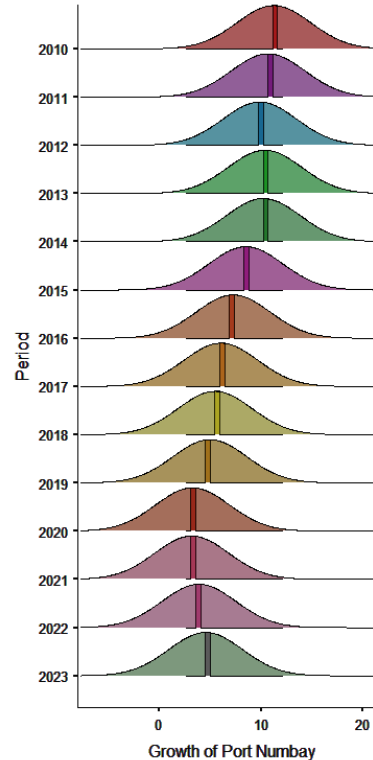
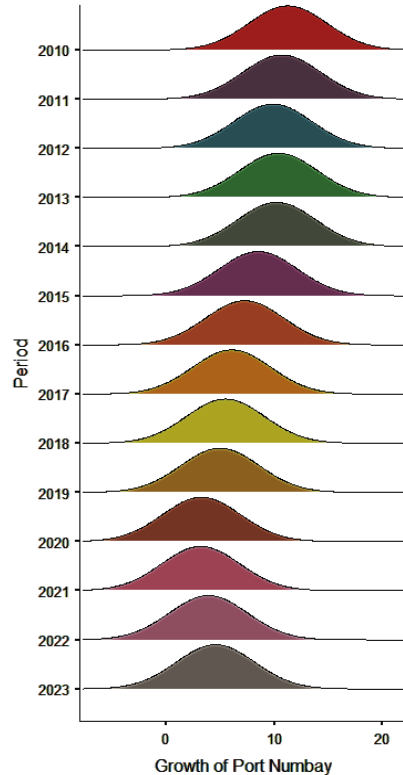
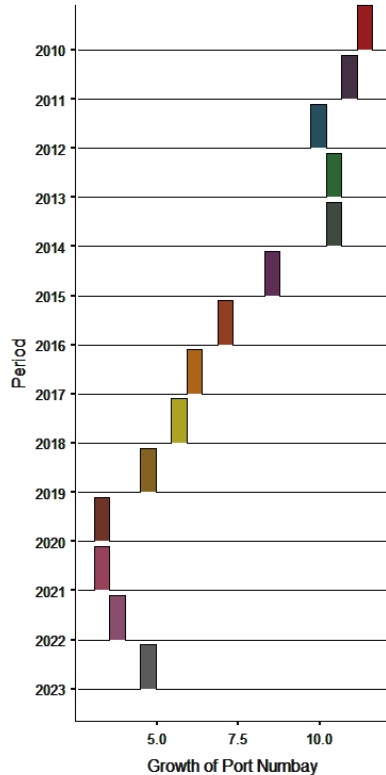




Kampus
Merdeka
INDONESIA JAYA

ZONA
INTEGRITAS
NOL TOLPUSI

Growth of Port Numbay



- ❖ Catatan Penting: Visualisasi ini terdapat extreme value, semoga anda tertarik identifikasi hal tsb;
- ❖ Gambar Kiri: Pertumbuhan ekonomi interval (5.0% s/d 10.00%);
- ❖ Gambar Tengah: Pertumbuhan ekonomi interval (0.0% s/d 20.00%)
- ❖ Gambar Kanan: Penggabungan 2 pendekatan pada satu visualisasi Pertumbuhan ekonomi interval (0.0% ke 20.00%);
- ❖ Ketiga gambar hanya memberikan indikasi makro ekonomi, sulit untuk menentukan faktor teoritis;

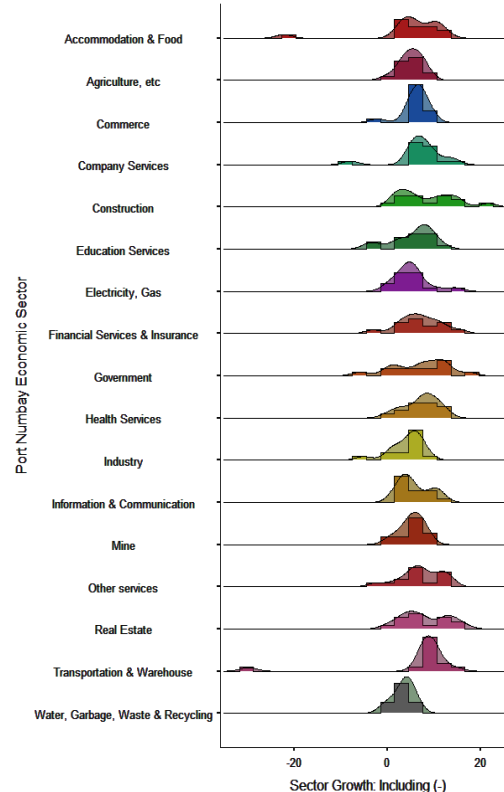
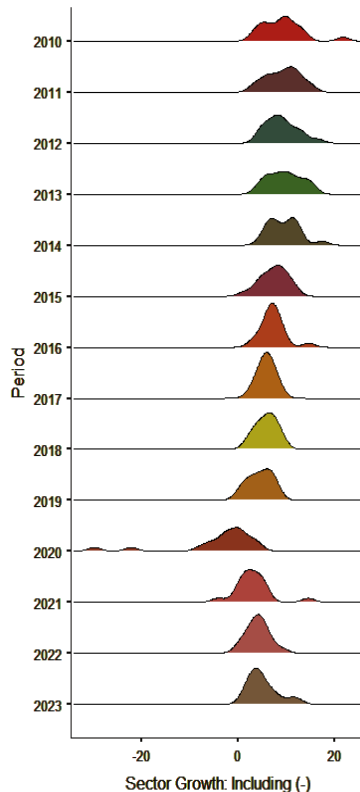
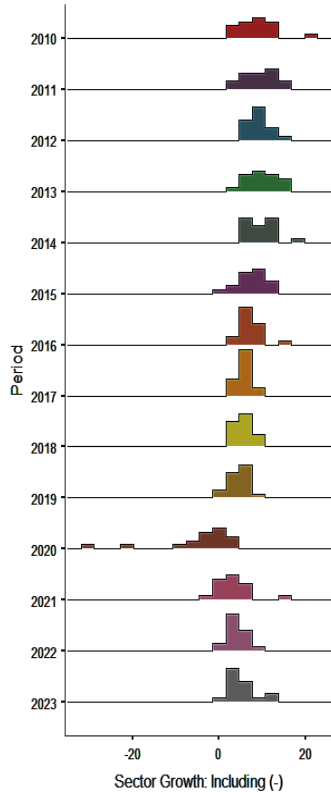


Kampus
Merdeka
INDONESIA JAYA

ZONA
INTEGRITAS



Economic Sector Growth



- ❖ Catatan Penting: Visualisasi ini menggunakan nilai valid BPS tanpa saya lakukan rasionalisasi.
- ❖ Gambar Kiri dan Tengah: Distribusi Time Series 17 sektor pada interval (-20.0% s/d 20.0%);
- ❖ Gambar Kanan: Distribusi Time Series & Kategorik 17 sektor pada interval (-20.0% s/d 20.0%);
- ❖ Ketiga gambar mampu menjelaskan kejelasan fenomena empiris, efek time series dan tendensi sektoral terhadap makro ekonomi Port Numbay. Namun Tidak bisa mengindikasikan faktor penyebab teoritis;

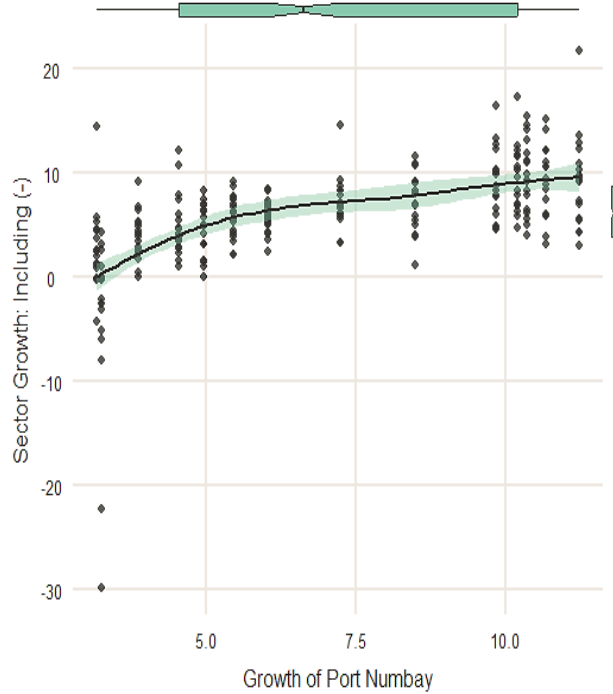
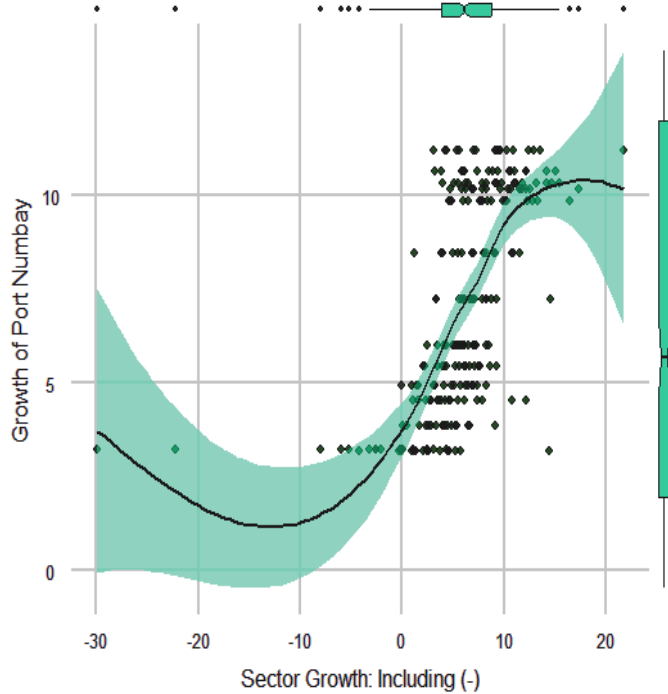


Kampus
Merdeka
INDONESIA JAYA

ZONA
INTEGRITAS



Sectoral Economic Growth VS Macro Economy



- ❖ Gambar Kiri: Visualisasi efek sektoral melakukan fluktuasi makro ekonomi port numbay interval (-30.0% s/d 20.0%);
- ❖ Gambar Kanan: Sentralisasi time series sektoral periode 2010 s/d 2023). Covid-19 menjadi pembelajaran sektor ekonomi masa depan;
- ❖ Selain fenomena empiris, anda telah mendapatkan indikasi statistik faktor penyebab. Jika anda tertarik lakukan simulasi terbaik, saran saya perhatikan extreme value dan tidak melakukan eliminasi;

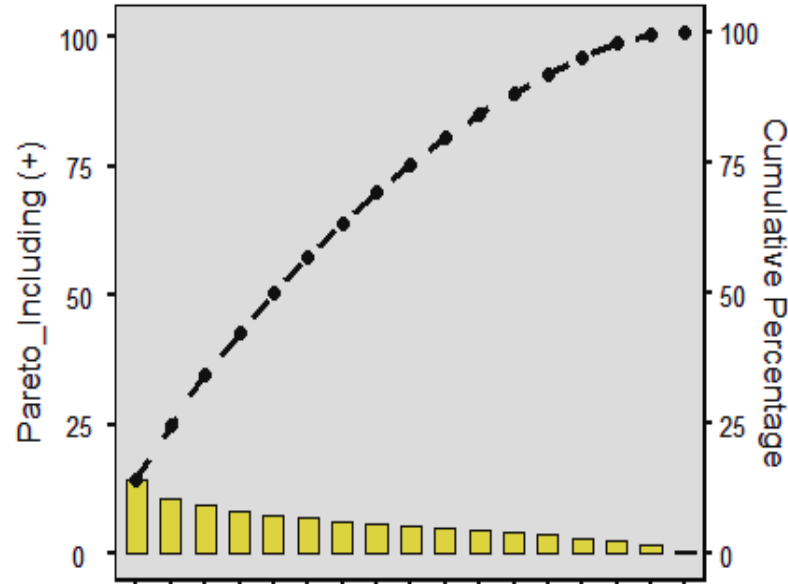


Kampus
Merdeka
INDONESIA JAYA

ZONA
INTEGRITAS



Pareto Indicator: Port Numbay Economic Sector



Perlu bijak menafsirkan pareto optimum, saya hanya fokus pada 20% persen efisiensi input serta mengurangi kegagalan sektor basis, mampu mendorong 80%. Kegagalan 1% sektoral (waktu Covid 19) melemahkan ekonomi Makro Port Numbay. Anda bisa interpretasi untuk menambahkan, atau anda menggunakan ide ini pada objek penelitian lainnya.



**Kampus
Merdeka**
INDONESIA JAYA

**ZONA
INTEGRITAS** 

SEMOGA BERMANFAAT

Boy Piter Nizu Kekri, SE.,M.Si

NIDN/NIP: 0024108908/198910242019031019

Alamat Email Pribadi: kekryboy@gmail.com

Alamat Email Institusi: boypiters.kekri@feb.uncen.ac.id